



LAMBERT-ST. LOUIS INTERNATIONAL AIRPORT TERMINAL 1 ATRIUM PUBLIC ART PROJECT REQUEST FOR QUALIFICATIONS

PURPOSE

The City of St. Louis, Board of Public Service, is seeking Statements of Qualifications from artists interested in creating a site-specific permanent artwork for the Lambert-St. Louis International Airport Terminal 1 Atrium. The total budget for the project is \$65,000 and includes design, fabrication and installation of the work. Qualifications are due June 26, 2013.

BACKGROUND

About Lambert-St. Louis International Airport

Lambert-St. Louis International Airport (“Lambert Airport”) is the primary commercial airport of the St. Louis, Missouri region which encompasses a population base of approximately 3 million people in 16 counties across the states of Missouri and Illinois. The St. Louis, MO-IL Metropolitan Statistical Area is centrally located within approximately 500 miles of one-third of the U.S. population and within 1,500 miles of 90 percent of the people in North America. Lambert Airport is located in St. Louis County, less than 20 miles from downtown St. Louis.

Lambert Airport, the 30th busiest airport in the U.S. (2012, ACI-NA), consists of two terminals housing three concourses. Its 11 air carriers operate approximately 250 daily flights to 62 non-stop destinations and serve approximately 13.7 million passengers a year.

Lambert Airport is currently undergoing its largest interior renovation to date. The \$70 million Airport Experience Program is modernizing the passenger experience through renovations of the historic Terminal 1, built in 1956 as well as Concourses A and C. The Airport Experience Program provided an opportunity for Lambert Airport to launch its Art and Culture Program to showcase both local and international art through temporary art exhibits and permanent art installations.

Art at the Airport

Lambert Airport’s main terminal building, now known as Terminal 1, opened in 1956. The Minoru Yamasaki-designed building with its soaring vaulted domes was immediately recognized as a significant piece of architecture and was the forerunner of modern terminal design. The terminal’s visionary architects commissioned artist Harry Bertoia to design a sculpture for the new building. Installed before the 1956 opening, the “Bertoia Screen” installation was composed of colorful suspended metal panes and separated the dining area from the rest of the terminal. The “Bertoia Screen” was removed in the mid-1960’s during an expansion of the

terminal. In addition, a pair of Henry Moore bronze sculptures, another significant public art installation, was set in the terminal building's outside garden area from 1961 to 1970.

Keeping with the tradition of public art at Lambert Airport, current permanent installations include nine architectural art glass triptychs installed on Concourses A and C, a 23-foot diameter terrazzo medallion designed by a local artist and installed in the security checkpoint area of Concourse C, the "Black Americans in Flight" mural on display since 1990 near the Concourse C passenger exit, and a 10-foot tall polished steel sculpture entitled "Sensación de Vuelo" which was installed in 2011 on the lawn area near the International Building and Terminal 2. In 2012, Lambert Airport opened its first dedicated exhibition space, the "Meeting Place Gallery", in Terminal 1. The "Meeting Place Gallery" houses museum-quality vitrines and provides space for both rotating art exhibits and art-related reception events.

The Art and Culture Program

In 2010, St. Louis City Mayor Francis Slay appointed seven highly qualified local art professionals to the Airport Art Advisory Committee ("AAAC") to provide Lambert Airport with expertise to guide and oversee its Art and Culture Program. In addition, Via Partnership, LLC ("Via"), a St. Louis-based public art consulting group, assists Lambert Airport in managing the Art and Culture Program. One of the critical functions that the AAAC and Via serve is to ensure that the public art chosen for display at Lambert Airport honors the terminal building's iconic architecture and its historic role as a civic space and aviation landmark.

To learn more about the Art and Culture Program, visit <http://flystl.com/art>

ATRIUM PROJECT DESCRIPTION

Description of Art Opportunity

The City of St. Louis will commission an artist to create a site-specific permanent public art project for a newly created atrium in Lambert Airport's Terminal 1 building. The Atrium was created as part of the Airport Experience Program when an escalator was removed between the ticketing (upper) level and the lower level. The Atrium creates a new shared space between the two levels and a focal point for passengers, with an opening measured at 18'7" x 14'6" and a fascia that is approximately 43" tall. The opening is surrounded on the upper level by a 42" high glass railing. An elevator is on the east side of the Atrium.

The Atrium allows daylight to reach the lower level; at night, people on the lower level can look up and view one of the Lambert Airport's signature skylights. The lower level of the Atrium is adjacent to restaurants, and is centrally located between the entrances to Concourses A and C as well as to the baggage claim carousels. The Atrium opens onto the lower level near the new stage area where musical performances and other public events are held. On the upper level, the future removal of baggage screening equipment next to the Atrium will create new open space to the exterior windows and skylights.

The **Atrium Public Art Project** will engage an artist to interact with this space to energize and enhance the new sight lines, visual connections, and architectural features that have been

revealed. The goal is to achieve a creative use of the space on both levels. The artwork could include (but is not limited to) the floor, the fascia, and/or the opening itself. Artwork that impedes passenger movement on either level will be discouraged. Artwork may not be suspended from the ceiling of the upper level.

Budget

The budget for the **Atrium Public Art Project** will be \$65,000. This budget will include all costs of creating the artwork, including but not limited to artist fees, travel, insurance, overhead, design, fabrication, site-work, shipping and installation costs.

SCOPE OF SERVICES

The anticipated services to be performed and scope of work under this contract shall consist of, but not necessarily be limited to the following:

- 1) Become familiar with Lambert-St. Louis International Airport, including a site visit. Review the site plans and architectural drawings for the area where the artwork will be located.
- 2) Develop a design concept that is in accordance with the overall goals of the project as expressed in this Request for Qualifications, as well as the use and aesthetics of the site; takes into consideration any technical specifications provided by Lambert Airport; is durable, taking into consideration that the site is a public space exposed to the movement of people; and does not conflict with federal, state or municipal laws, codes or regulations.
- 3) Present concept for review by the Airport Art Advisory Committee. This could occur during a video-conference or an in-person meeting, to be determined later.
- 4) Fabricate or oversee the fabrication of the artwork.
- 5) Deliver artwork for installation.
- 6) Install the artwork.
- 7) Attend project dedication events, as requested.

SUBMITTAL OF STATEMENT OF QUALIFICATIONS

Interested artists shall **submit TWO (2) copies** of the Statement of Qualifications for the type of work outlined above.

What to Submit

1. A letter (2-pages maximum) describing your interest in the project and confirming your ability to meet the project timeline.
2. A CV/resume (3-pages maximum) and the name and contact information for 3-5 references.

3. An image list providing image number, title, medium, dimensions, brief description, date of work, commissioning entity and budget for each image submitted.
4. Up to 15 jpeg images of previous artwork on a CD or DVD, clearly labeled with the artist's name.

Image File Format: Images must be submitted as JPG files and be less than 1 MB each. "High quality" files at 300 dpi, no more than 1920 pixels on the longest side, are recommended for best viewing by the jury.

Image File Labeling: Files must be titled with a number indicating the viewing order, followed by the artist's last name. Use "0" in front of single digit numbers. Do not use more than 30 characters; use only letters, numbers and underscores. Example: 01_Smith; 02_Smith. Mac OS users: Image files must be in JPEG format and include ".jpg" at the end of each image title. Example: 01_Smith.jpg.

Note: This is a request for qualifications only. Specific proposals will not be reviewed at this time.

How to Submit

Please send your Statement of Qualifications to the attention of **Bette Behan, Contract Supervisor** at the following address:

The Department of the President
Board of Public Service
1200 Market Street,
Room 301 City Hall
St. Louis, MO 63103

The qualifications and envelope shall identify the submittal is for:

**STATEMENT OF QUALIFICATIONS
LAMBERT-ST. LOUIS INTERNATIONAL AIRPORT
TERMINAL 1 ATRIUM PUBLIC ART PROJECT
SAINT LOUIS, MISSOURI**

SUBMITTAL DUE DATE: Statements of Qualifications will be received no later than 5:00 p.m., Wednesday, JUNE 26, 2013.

Responses received after the due date will not be accepted. The Board of Public Service reserves the right to accept or reject any or all responses, or to cancel this request in part or in its entirety. All submittals become and remain the property of the City of St. Louis.

QUALIFICATIONS EVALUATION CRITERIA

Selection Criteria

- Artistic excellence as demonstrated by past work and the submitted materials.
- A clear understanding of the project.
- Artistic interest and body of work demonstrating an ability to create an artwork that responds to the goals of the project.
- Availability to meet the project timeline.

SELECTION PROCESS

Artist's qualifications will be reviewed by the Airport Art Advisory Committee. Based upon the review of qualifications, the AAAC may select one artist or invite multiple artists to develop a concept proposal. The finalist or finalists will be paid an honoraria and travel stipend to develop and present the concept.

Anticipated Timeline

June 26, 2013	Qualifications due
July 2013	Finalist(s) selected
August 2013	Finalist site visit
October 2013	Finalist(s) present concept to Airport Art Advisory Committee
November 2013	Final approval of selected artists/concept and artist contract
January 2014	Final design/engineering
Summer/Fall 2014	Installation

CONTACT INFORMATION

Questions must be received by June 10, 2013. All questions and/or requests for additional information shall be directed concurrently to:

- Bette Behan, Board of Public Service, by fax at 314-622-4028 or by e-mail at BehanB@stlouiscity.com (please reference project name "**Atrium Public Art Project**" in the Subject Line if sending an e-mail); and
- Meridith McKinley, Via Partnership, by phone at 314-664-5902 or by email at mckinley@viapartnership.com (please reference project name "**Atrium Public Art Project**" in the Subject Line if sending an e-mail).

If needed, questions with answers will be made available to all who have registered to download the RFQ from the BPS website, and will be posted in the On Line Plan Room project file.

RFQ POSTING LOCATION

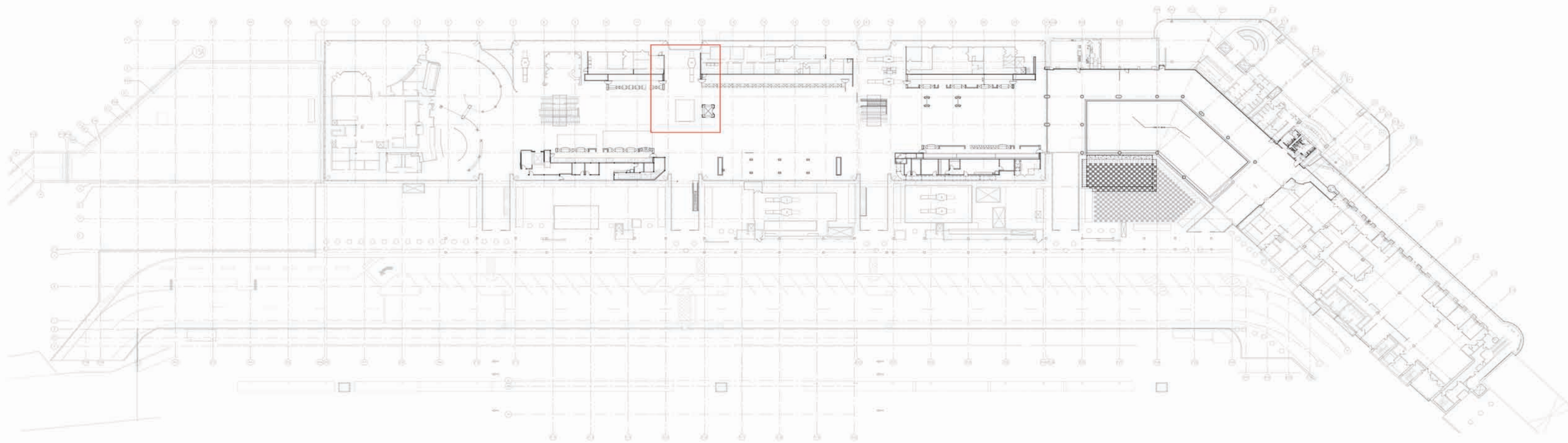
- Board of Public Service On Line Plan Room at www.stl-bps.org

ATTACHMENTS

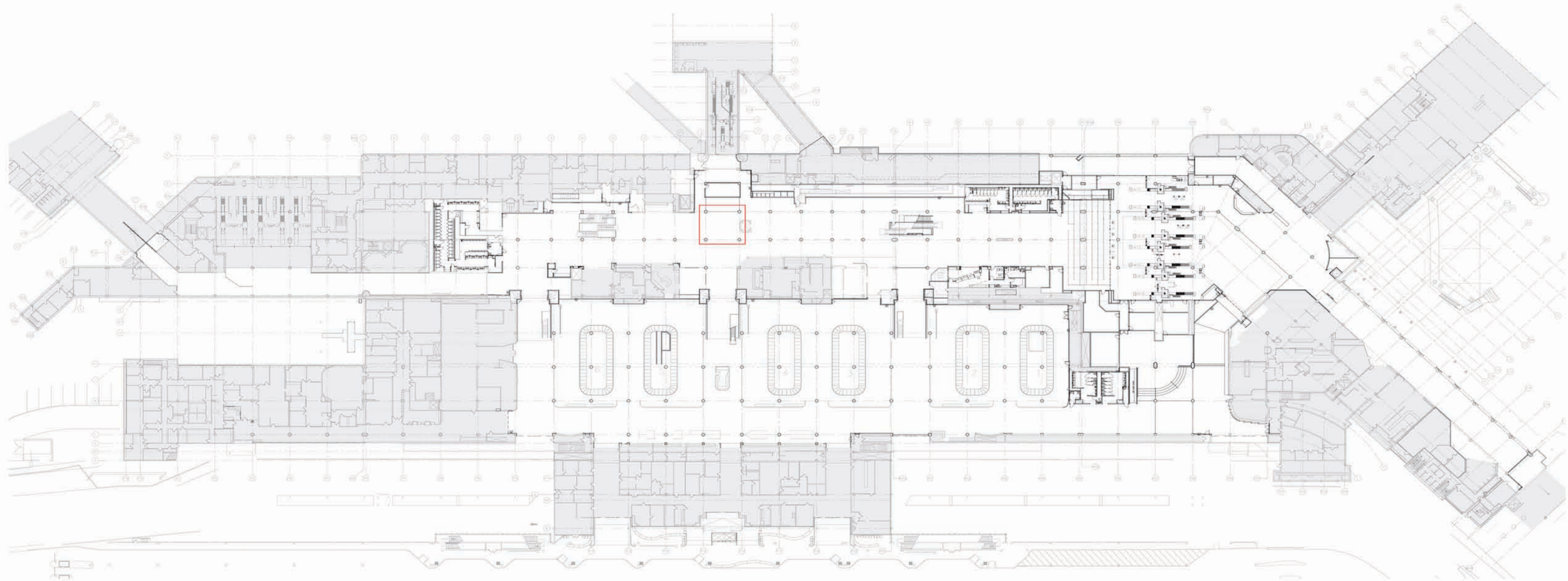
Attachments

- A - Upper level site plan
- B - Lower level site plan
- C - Photographs

Attachment A: Upper Level Site Plan



Attachment B: Lower Level Site Plan



Attachment C: Photographs



Fig. 1: Atrium from lower level, looking at elevator bay.



Fig. 2: Atrium from lower level, with view to upper level.



Fig. 3: Atrium from lower level, with view to upper level skylight.



Fig. 4: Atrium from upper level.