

Towson University
College of Health Professions

8000 York Road, Towson, MD 21252



**Request for Qualifications for
2-D/Low Relief and 3D/Sculptural
Artwork Commissions**

Solicitation #:	19-023
Artwork Commission Budgets: <i>*Click link to Apply</i>	\$190,000 (Interior, 2-D/Low Relief) \$355,000 (3-D/Sculptural)
Issued:	June 17, 2022
Application Deadline:	5:00 p.m. (EST) Wednesday, August 15, 2022

Contact: Ryan Patterson
Public Art Project Manager
Maryland State Arts Council
401 East Pratt Street, Ste. 1400
Baltimore, MD 21202
ryan.patterson1@maryland.gov
(443) 721-3085
www.msac.org

Call Summary

Towson University (TU), in partnership with the Maryland State Arts Council (MSAC), seeks to commission artists or teams to create permanent public artwork for the new **College of Health Professions (CHP)** building. Two artwork commission opportunities are offered:

- Two-dimensional, or low relief artwork for the interior; *and*
- Three-dimensional, sculptural, or landscape based artwork

Artists and teams with the appropriate qualifications and experience may apply to both locations, but are required to submit two separate applications.

The commissioned artworks should serve as welcoming and attractive additions to the Towson University campus, helping to draw attention to the important collaborative work happening within the College of Health Professions. In addition, the artwork must:

- Be original, unique, and appropriate for the location.
- Relate to the artwork goals set by the College of Health Professions and Towson University.
- Be highly durable, structurally sustainable, theft and damage resistant. (The interior artwork, in particular, must be easily able to be cleaned. Dust resistant/easily wipeable surfaces are highly encouraged)

Artists selected to receive a commission contract will be expected to review their artwork concepts with the project team, including MSAC, University of Maryland, Baltimore, and Towson University to ensure that the artwork is appropriately designed and engineered through all stages of design, fabrication, and installation. Final acceptance is subject to approval by Towson University, which will become the owner of the artwork.

Budget Description,

The Artist Selection Committee has identified the following budgets to commission artwork for the new College of Health Professions:

- \$190,000 to commission two-dimensional, or low relief artwork for the interior of the CHP building
- \$355,000 to commission three-dimensional, sculptural, or landscape-based artwork created for the CHP building or exterior landscape.

The Artwork Commission budgets include all artist design and project management fees; studio overhead including travel for site research and meetings; a complete artwork proposal including written project narrative, itemized budget, maintenance plan, renderings and other visuals, schedule, description of all subcontractors roles and responsibilities for installation; stamped structural engineering drawings (when applicable); related permits, licenses and insurance; materials, fabrication, and installation, plaque, and lighting.

Note: It may be possible to coordinate the installation of some site-prep elements through the building contractor in alignment with the construction schedule. Any expenses that exceed the contracted amount will be the artist's responsibility.

Up to three Semi-Finalists, for each artwork location, will be invited to develop and present artwork concept proposals to the Artist Selection Committee in-person. Semi-finalists will be offered a stipend of \$2,500 each for their time and travel. It is possible that a single artist/artist team could be awarded both the interior and exterior commission contracts.

Project Description:

The two public art commission opportunities offered for the TU CHP are part of a State of Maryland Capital Improvement Project, managed by the University of Maryland, Baltimore. The Public Art Across Maryland: Artwork Commissions program serves as the state's "percent-for-art program", commissioning artwork for new and renovated State-owned buildings; it is administered by the Maryland State Arts Council staff and overseen by the Maryland Public Art Commission. Upon completion, all artwork will become the permanent property of Towson University.

Public Artwork Themes and Goals

Artists interested in creating work for the College of Health Professions should be familiar with [Mission, Vision, and Core Values](#) of the College of Health Professions.

Both the interior and exterior artwork will be adornments to a building that was intentionally designed to facilitate a connection between the occupants and the healing properties of the natural environment (access to fresh air, sunlight, water, planted landscapes...), with that in mind the Artist Selection Committee has identified the following themes that artwork concepts may reference:

- *The elements of health: physical, social, environmental, emotional, spiritual, and intellectual wellness*
- *The beauty and awe of healing*
- *Energy, achievement, and possibility*
- *Care, nurturing, stewardship and service*
- *Interactions with seasonal changes in natural light and solar exposure throughout the building.*

The **two-dimensional or low relief artwork** created for the interior of the building must be: highly durable, structurally feasible and sustainable, theft and damage resistant, and easily able to be cleaned. Dust resistant/easily accessible and wipeable surfaces such as glass are highly encouraged. The artwork should avoid blocking the circulation of air and light within the building. There is not an opportunity exterior two-dimensional or mural artwork

The **Three-dimensional or sculptural artwork** may include a project that interacts with or incorporates the landscape. Artworks should be visible from multiple vantage points and serve as an attractive addition to the TU campus while being highly durable, structurally feasible and sustainable, theft and damage resistant, and easily able to be maintained.

Location Description

The new CHP building is located within the Towson University campus, in Towson, MD, approximately 8 miles north of downtown Baltimore. The CHP will occupy a 3.85-acre site on the south side of University Avenue, with the Liberal Arts building to its west and Linthicum Ave to its east. The 228,993 Gross Sq. Foot /130,853 Net Sq. Foot new College of Health Professions facility will consolidate the College of Health Professions departments (other than Kinesiology which will remain at Burdick Hall) and the Dean's office, and provide new instruction, office, study, research, and clinical space. The new facility responds to and supports the changing needs of the healthcare industry and education. It is designed intentionally to foster and support student and faculty research in the College and promote formal and informal collegial exchange. It will also include spaces that address respite and self-care so busy healthcare providers remember to take care of themselves while still caring for others.

The new artworks commissioned for the CHP should be oriented towards the most public areas of the facility and visible from multiple points of view. Both the interior and exterior of the building include multiple locations that may be appropriate for site-specific artwork to be installed. Artists and teams invited to participate as semi-finalists will be provided a detailed orientation to the project, highlighting specific areas where art may be installed.

History & Overview of Towson University College of Health Professions

Towson University, founded in 1866 as the Maryland State Normal School offers nationally recognized undergraduate and graduate programs in the liberal arts, sciences, arts, and applied professional fields.

Located eight miles north of downtown Baltimore, Towson University enrolls more undergraduate students from the region than any other institution in the University System of Maryland. The University places emphasis on attracting well-prepared academically inclined students. National recognition of its excellent programs in the arts and sciences, business, communication, fine arts, health professions, and teacher education contributes to Towson's distinction as the comprehensive university in the Baltimore region.

The university's longstanding commitment to creating a multicultural campus is advanced by policies and practices that promote the recruitment and retention of diverse student, staff, and faculty bodies that reflect local, regional, national, and global diversity. Curricular and extracurricular programs support the university's commitment to diversity and inclusion. Towson's core values reflect high standards of integrity, collaboration and service, contributing to the sustainability and enrichment of the culture, society, economy, and environment of the State of Maryland and beyond.

The **CHP** serves as a major educational, research, and outreach resource for health and well-being in the university, the community, and the State of Maryland. The College enrolls more bachelors and masters health and sport-related professional students than any other institution in the State of Maryland and has one of the largest enrollments in the Mid-Atlantic Region.

The College's vision is to be a preeminent leader in the education of health, human service, and sport-related professionals for practice, education, management, and research and in the provision of initiatives that support the integration of health, well-being, and education for a diverse population in Maryland and beyond. The Dean of the College of Health Professions oversees the five departments within the college, which include: Nursing, Health Sciences, Occupational Therapy and Occupational Science, Kinesiology, and Speech-Language Pathology & Audiology and the Institute for Well-Being, and interprofessional education and practice center for the College. . Each Department has a faculty chairperson who reports to the Dean of the College.

Eligibility

All professional artists or artist teams living in the United States may apply. If artists apply as a team, the team should be listed on the application, specifying a team leader to receive notifications. Artists currently enrolled in a university or college degree program are not eligible to apply. Employees of Towson University, the University of Maryland-Baltimore, and the Maryland State Arts Council are not eligible to apply.

Application Requirements:

All applicants must submit the information listed below. **Incomplete applications may be returned or rejected.** Artists may apply as teams, either by creating a single team application or “linking their applications” within PublicArtist.org.

- **Contact Information**

This is associated with your account in PublicArtist.org. If applying as a team or on behalf of someone else, please submit the application under the name/account of the “lead artist”.

- **Artist Resume/CV** 5 pages max.

- **Ten (10) Artwork Samples:**

Artwork samples may be submitted as a jpeg, video file, but the majority of samples should be still images. Video files should not be longer than 3 min each. Proposal Renderings for projects that have been designed but not fabricated/installed may be included, but labeled ‘not built’ in the description section. Samples may include multiple images of the same artwork from different angles or highlighting specific details, but it is recommended artists avoid collaged or composite slides including more than two images per file. If using composite slides, a horizontal format is recommended. Please include all relevant information (scale, material, year, budget, location, commissioning agency, etc...) under the “Artwork description” area.

- **Statement of Interest:** This is an opportunity for each artist or team to address their interest and approach to this particular commission opportunity. Successful applicants will address the themes & goals of this project.

Visual or narrative artwork proposals are not accepted at this time.

Applications including explicit proposals for CHP project may be removed from the review.

Artist Selection Process:

All artists submit applications through PublicArtist.org at the following links:

[\\$190,000 \(Interior, 2-D/Low Relief\)](#)

[\\$355,000 \(3-D/Sculptural\)](#)

All applications received will be reviewed by staff for completeness and eligibility based on the submission requirements, and the unique contexts of this project as they are described above.

All applications deemed eligible by staff will be advanced to the Artist Selection Committee for review and scoring based on the Selection Criteria. The Artist Selection Committee will choose up to three applications, per commission location, to be advanced as Semi-finalists. Semi-finalists will be notified by staff and invited to develop artwork concept proposals. Following a development period, Semi-finalists will present their concepts to the Artist Selection Committee. Following the Semi-finalist interviews, the Artist Selection Committee will select a finalist to be awarded the commission contract. Artists or teams may apply to both the interior and exterior artwork commission opportunities. If an artist or team is selected as a semi-finalist for both sites, they are eligible to be awarded both contracts if selected by the panel.

The selected artist(s) will enter into a contract directly with the University of Maryland, Baltimore, who is responsible for managing the state capital construction project. The artist's contract must be approved by the Maryland Board of Public Works before work can commence.

The selected artist(s) or team must be able to register as a Maryland vendor and adhere to all applicable state permitting and licensing and tax requirements for the duration of the contract.

Selection Criteria:

The Artist Selection Committee will review and score all complete and eligible applications based upon the following criteria.

1. The applicant’s demonstrated experience working with teams completing projects of comparable scope and scale. (40%)
2. The applicant’s work samples reflect originality, technical skill, sensitivity to site, and knowledge/experience of materials and fabrication methods suitable for permanent installation in a public environment (40%)
3. Expressed interest in creating a signature work of art for the College of Health Professions site location, and artwork themes and goals described above. (20%)

Timeline:

RFQ Posted	June 2022
RFQ Application Deadline	August 2022
Semifinalist Notification	October 2022
Semifinalist Site Visit/Interview (in-person)	November 2022
Selected Artist Notification	November 2022
Contracting & Procurement	December-January 2022
Notice to Proceed: Artwork Kick-Off Meeting	February 2023
Building Substantial Completion	January 2024

Artist Selection Committee Representation

The committee established to review and score applications for this Request for Qualifications includes representatives from the following:

- University of Maryland, Baltimore
- Towson University Architecture & Facilities Management
- Towson University College of Health Professions
- Towson University College of Fine Arts & Communication
- Maryland Public Art Commission
- Building Architect and/or Landscape Architect

Maryland State Arts Council Public Art Program staff serve as non-voting committee members responsible for project administration and management.

Questions and Inquiries:

All questions and inquiries must be in writing and directed to:

Ryan Patterson, Maryland State Arts Council, Public Art Project Manager,
ryan.patterson1@maryland.gov or (443) 721-3085

About the Maryland Public Art Across Maryland Program:

Established in 2013, Public Art Across Maryland is the State of Maryland's Percent-for-Art program. For all new or renovated State-owned buildings, a percentage of the construction budget is set aside for public art.

Independent artists apply for a project through an open Call to Artists and are selected by an artist selection committee. MSAC manages the process from artist selection through design, fabrication, and installation, and the work becomes part of the State public art collection. msac.org

-ATTACHMENTS FOLLOW-

EXTERIOR. RENDERING



EXTERIOR. RENDERING



EXTERIOR. ELEVATIONS



WEST ELEVATION



SOUTH ELEVATION

EXTERIOR. ELEVATIONS

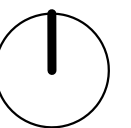
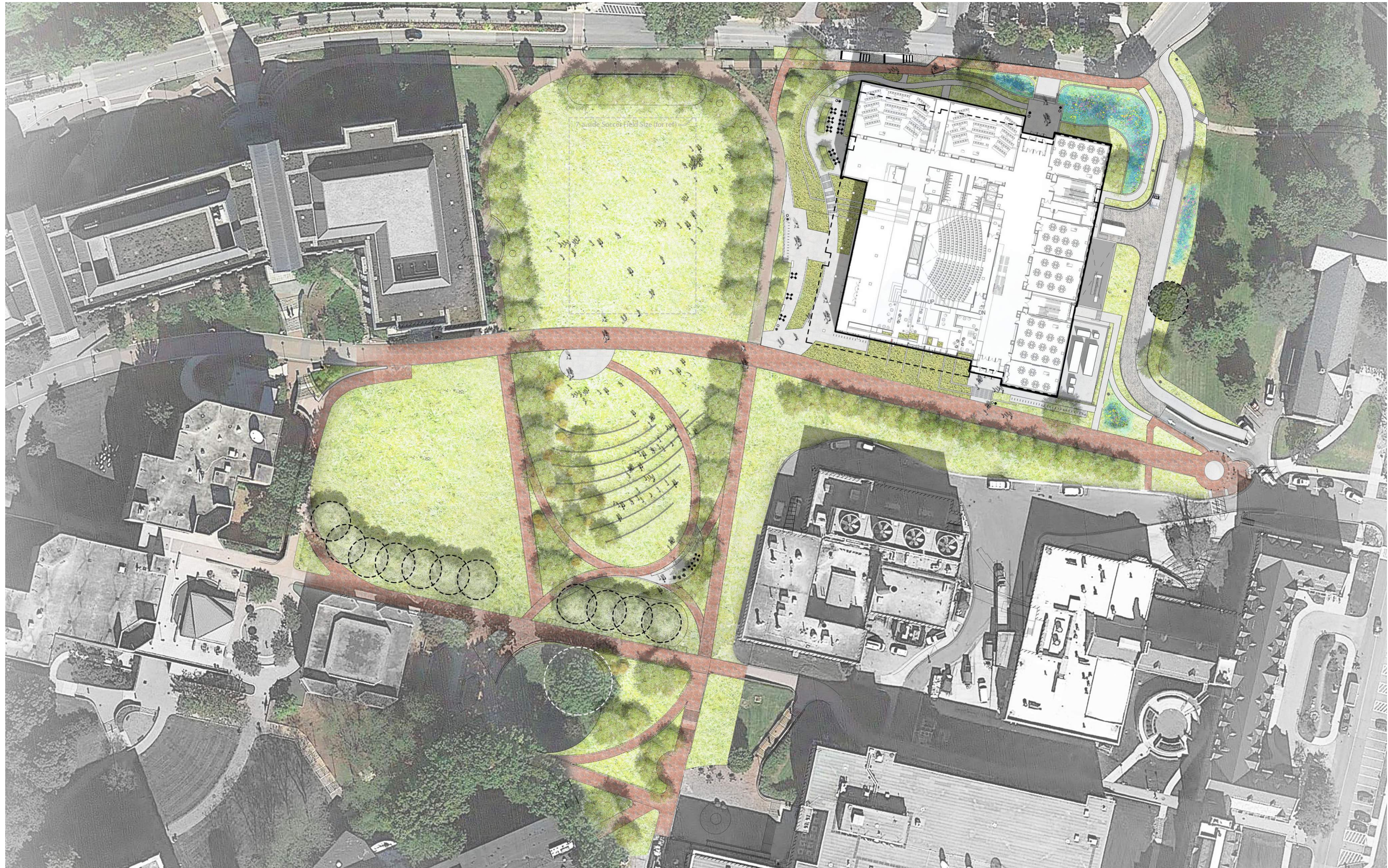


EAST ELEVATION



NORTH ELEVATION

LANDSCAPE. CHP SITE & QUAD



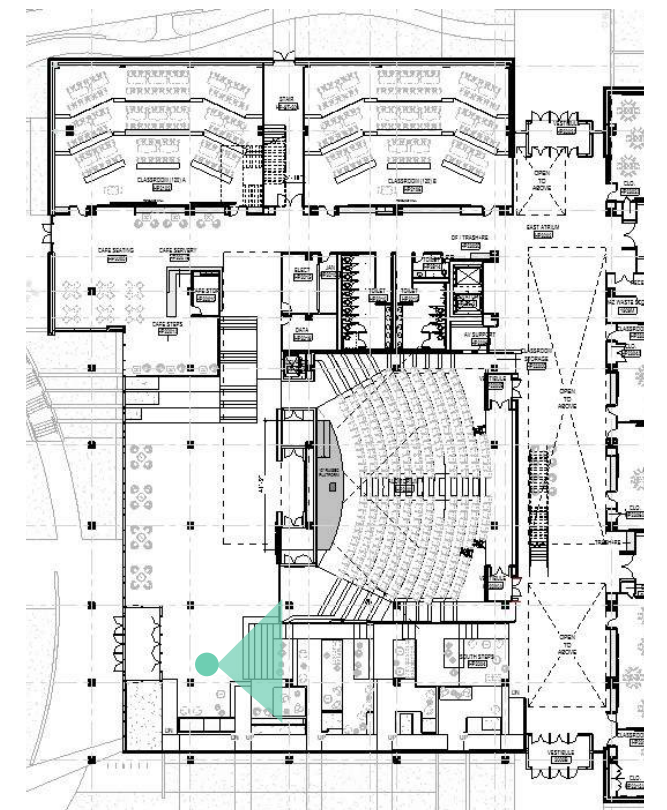
LANDSCAPE. QUAD



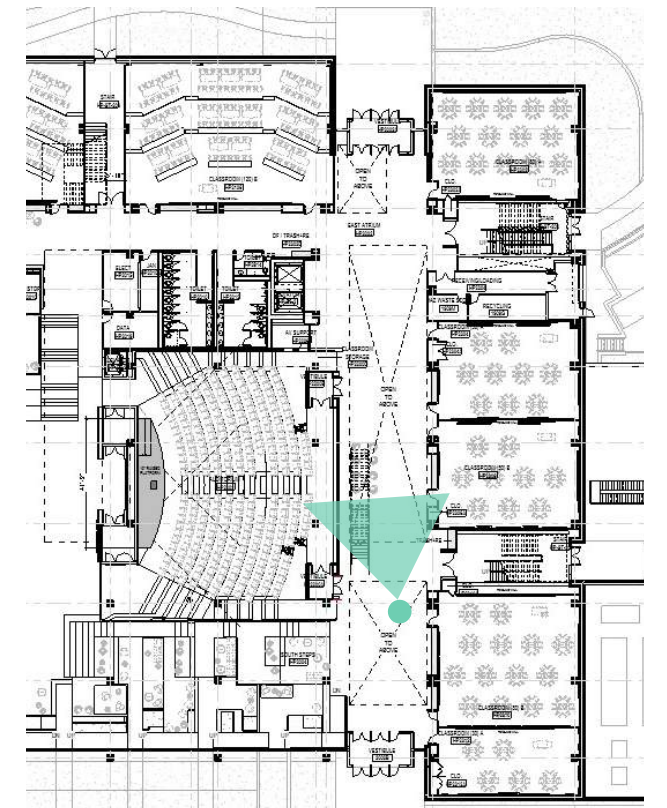
SECTION.



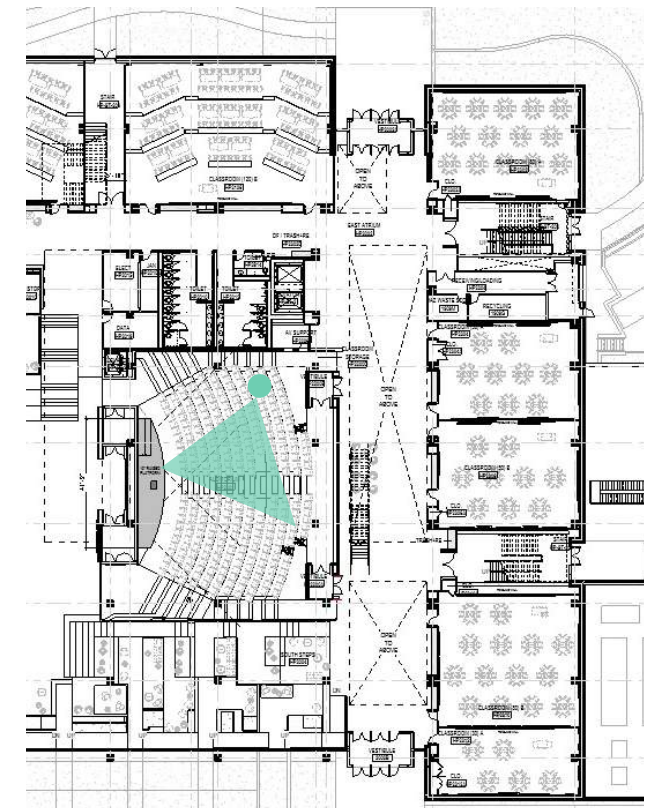
INTERIOR. STEPS



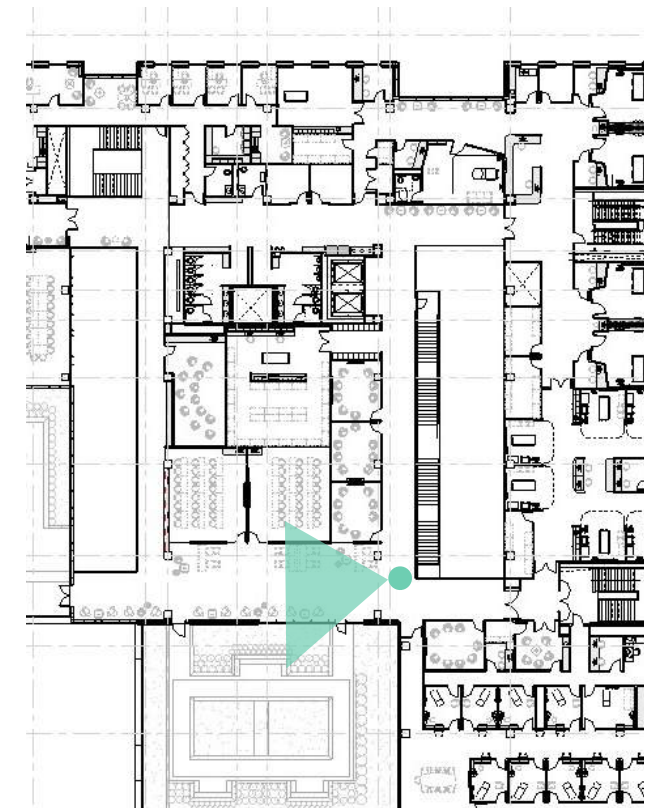
INTERIOR. ATRIUM



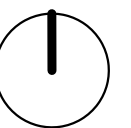
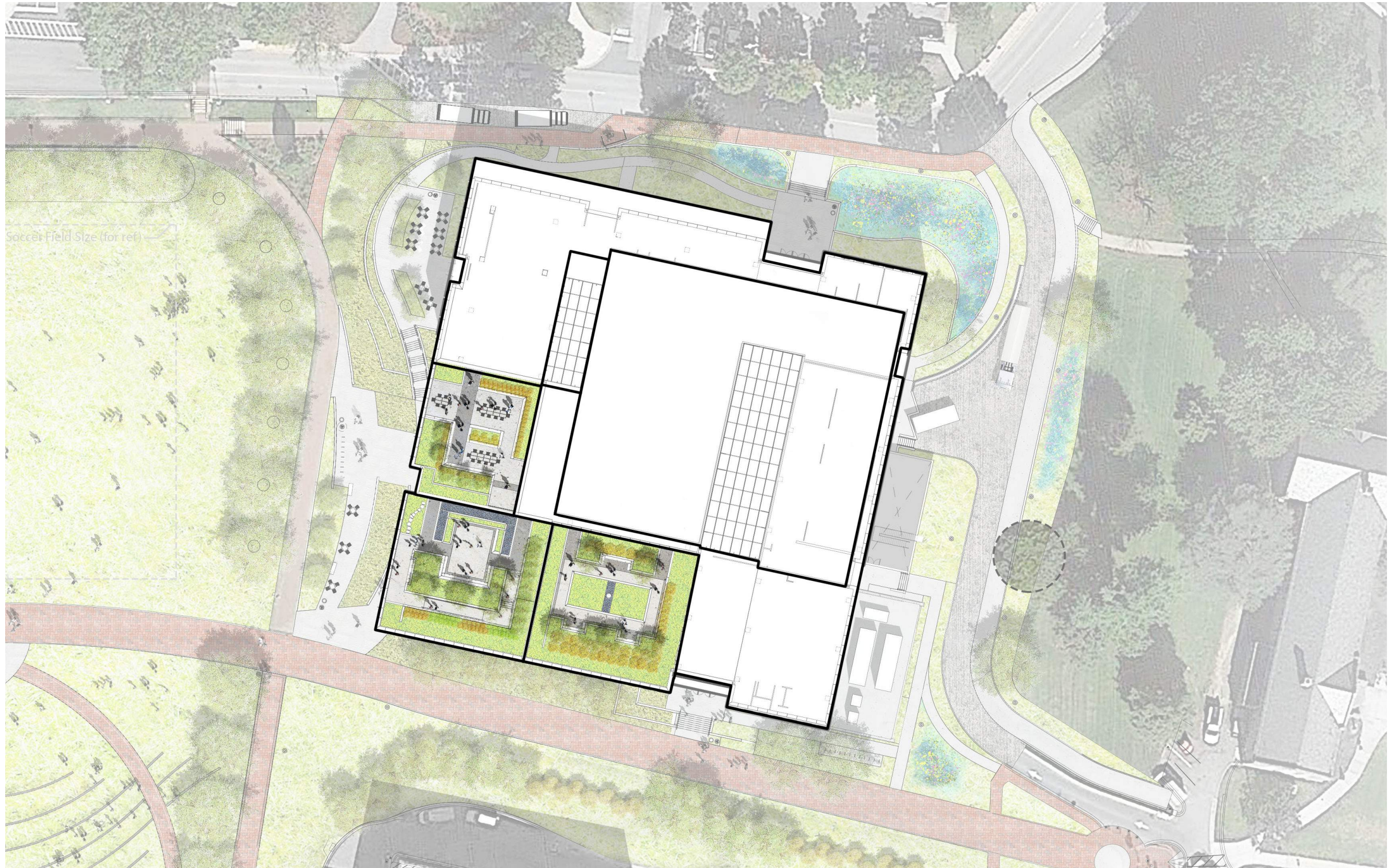
INTERIOR. AUDITORIUM



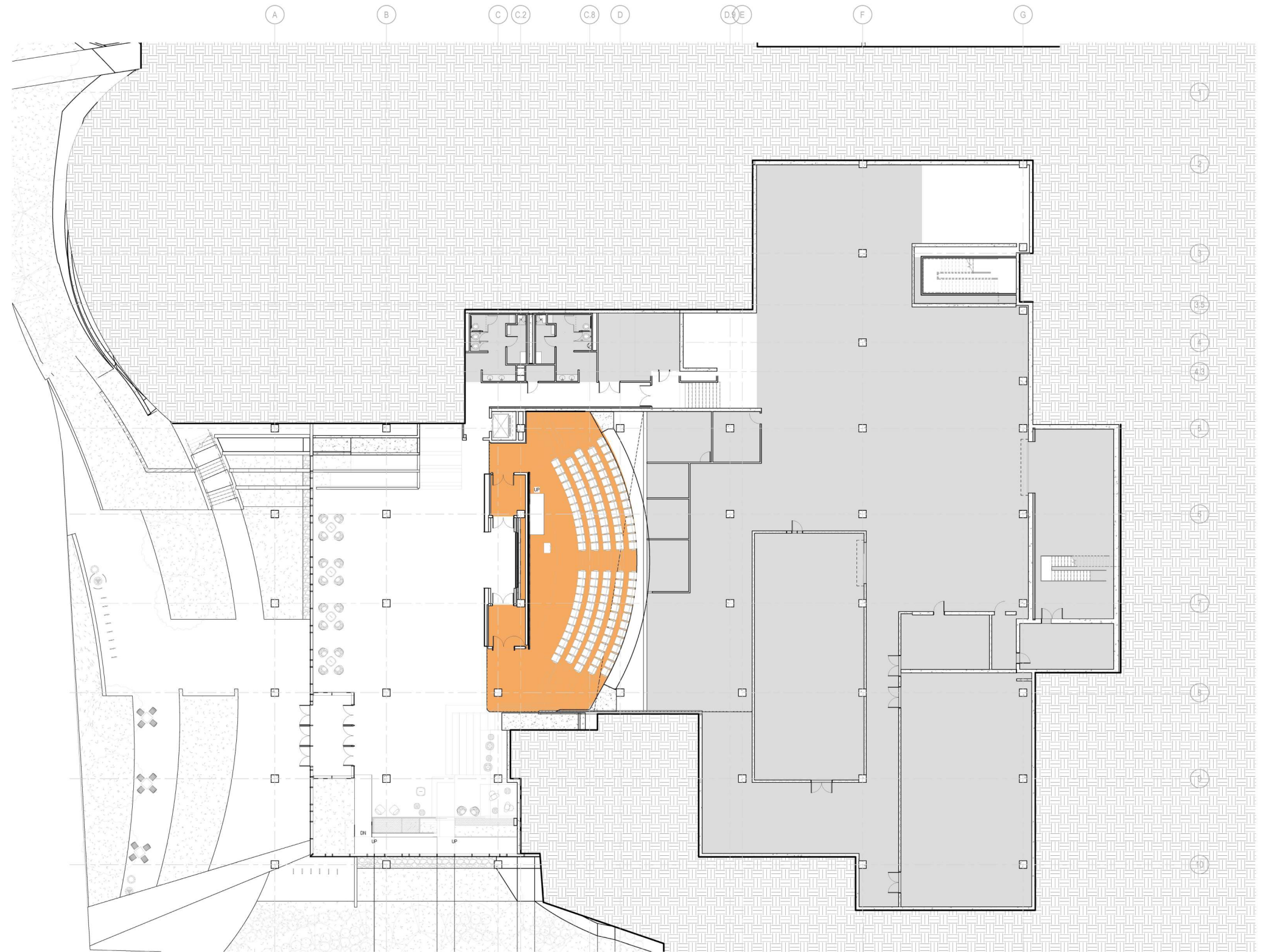
INTERIOR. COLLABORATION



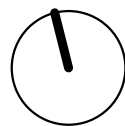
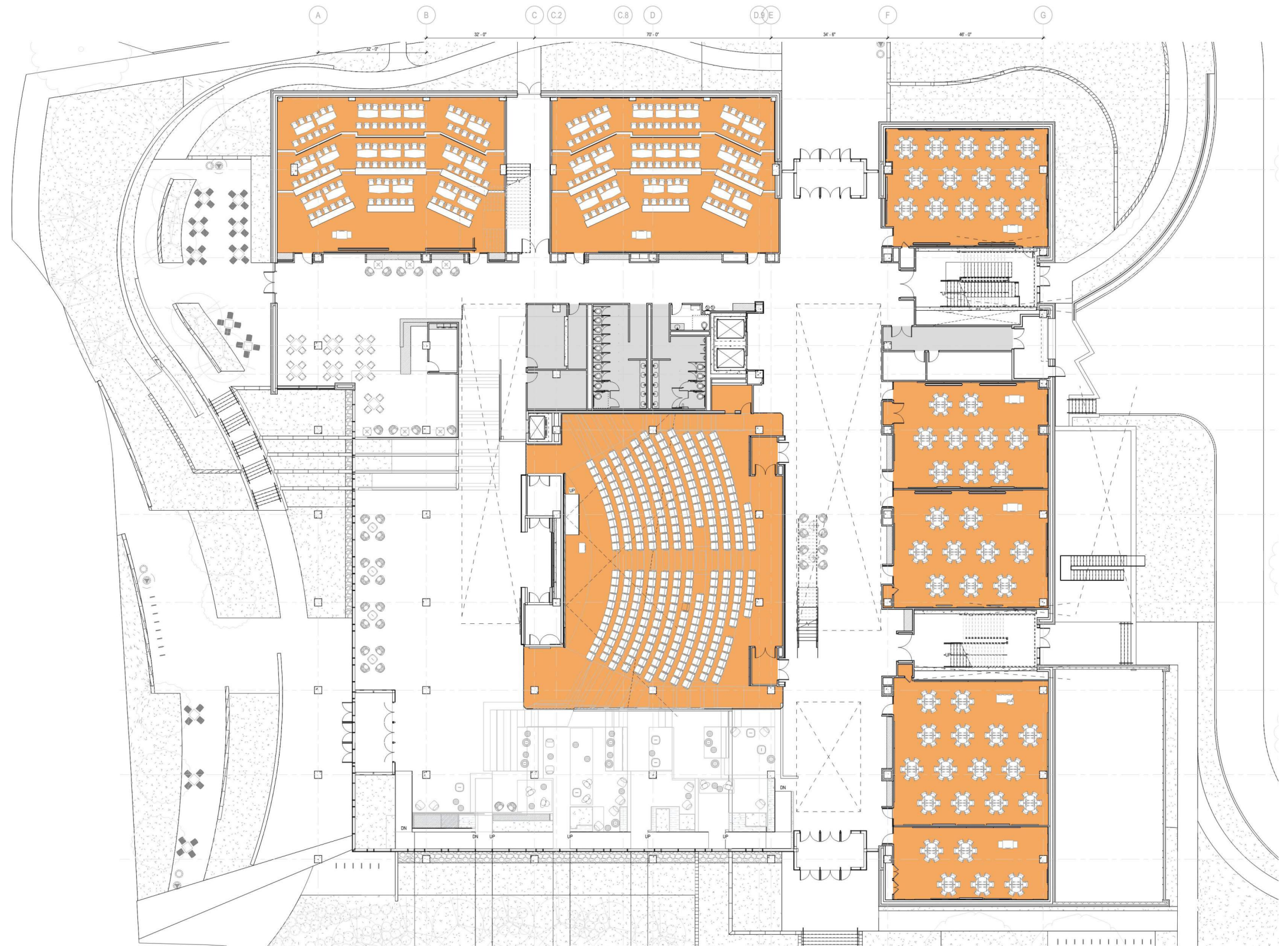
LANDSCAPE. CHP VEGETATED ROOFS



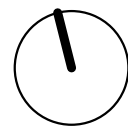
FLOOR PLANS. LEVEL 01



FLOOR PLANS. LEVEL 02



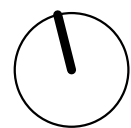
FLOOR PLANS. LEVEL 03



FLOOR PLANS. LEVEL 04



FLOOR PLANS. LEVEL 05



FLOOR PLANS. LEVEL 06

