

SEATTLE-TACOMA INTERNATIONAL AIRPORT (SEA) BOLLARDS PROJECT

Public Art Program Open Call - Request for Qualifications

Port of Seattle

Location: SEA Skybridges 2, 3, 4 and 5

Eligibility: Open call. All entries must be original work.

Budget Total:

1 Artist, Skybridge 2: \$72,000

1 Artist, Skybridge 3 and 4: \$72,000

1 Artist, Skybridge 5: \$72,000

The budget total for each skybridge includes but is not limited to taxes and delivery/shipping. Other budget details will be included in artist's agreement/contract.

Call Summary

The Port of Seattle's Public Art program is seeking three (3) multidisciplinary visual artists or artist team to submit their qualifications to our invitational call. This call will allow for artists to submit qualifications for consideration to be awarded a contract for this concept. The existing bollards can either be utilized as a free-standing pedestal or use the stainless-steel structure for etching, sandblasting or engraving projects. The bollards are located in parking garage at SEA (level 4), specifically skybridges 2, 3, 4, 5 and other strategic locations on Arrivals and Departures drive.

Completed artworks must be thoughtful in regard to long term maintenance and conservation. The work must be suitable for permanent installation in a high contact outdoor environment and appropriate for public presentation considering the wide range of visitors to the airport.

Project Information

The project includes four (4) level 4 parking garage at SEA locations, one is located at Skybridge 2, one at Skybridge 3 and 4 and the last one at Skybridge 5. The estimated completion date for this project is Q1 2026.

The most important aspect for any airport is to create a safe and accessible environment for all. This project is focusing on the traveler journey starting from the moment you step out of your car. Steel bollards have been installed on both Upper Departures and Lower Arrivals Drives approximately every three to five feet as well as at the entrance to all skybridges on the Parking Garage side and along the courtesy vehicle plaza. These bollards are being installed for the safety and security of all travelers, employees, and volunteers.

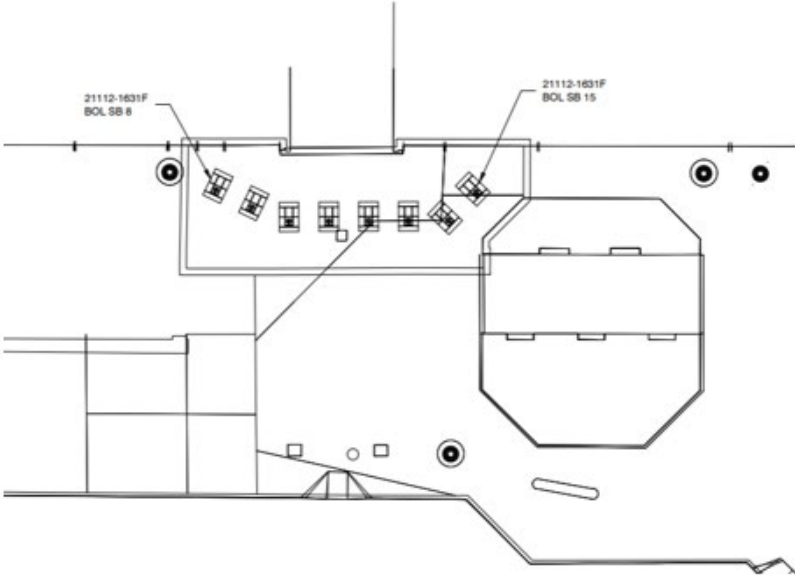
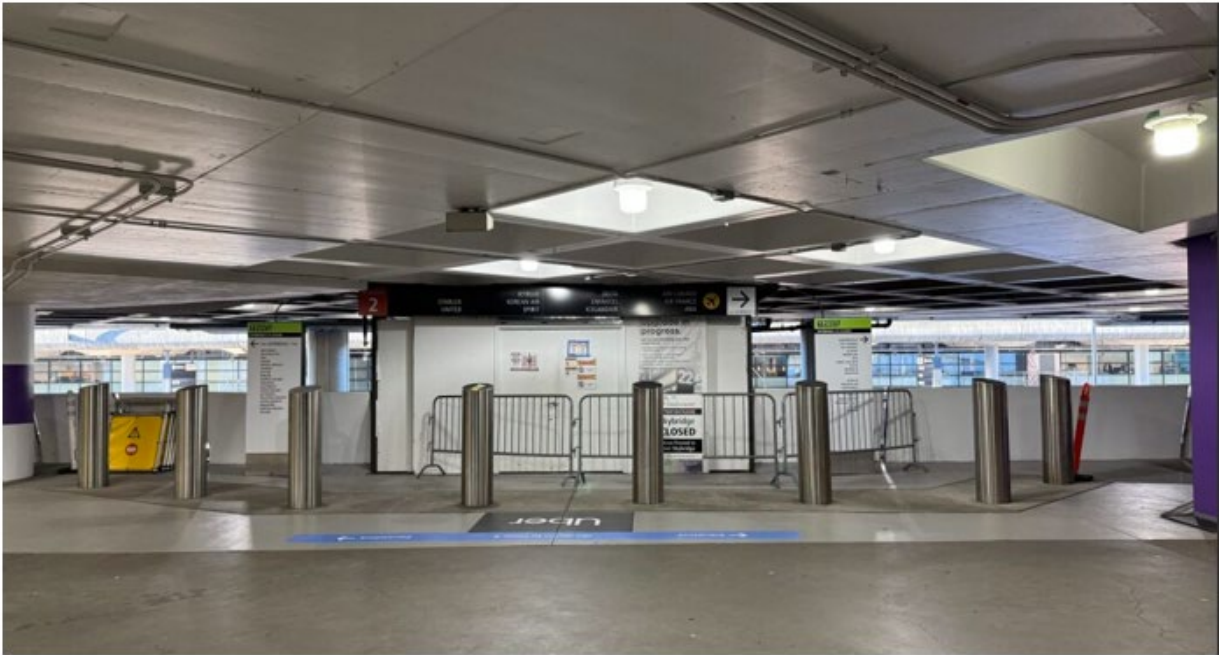
Location Themes:

- Skybridge 2 (yellow): Field
- Skybridge 3 (purple): Mountain
- Skybridge 4 (orange): River
- Skybridge 5 (blue): Ocean

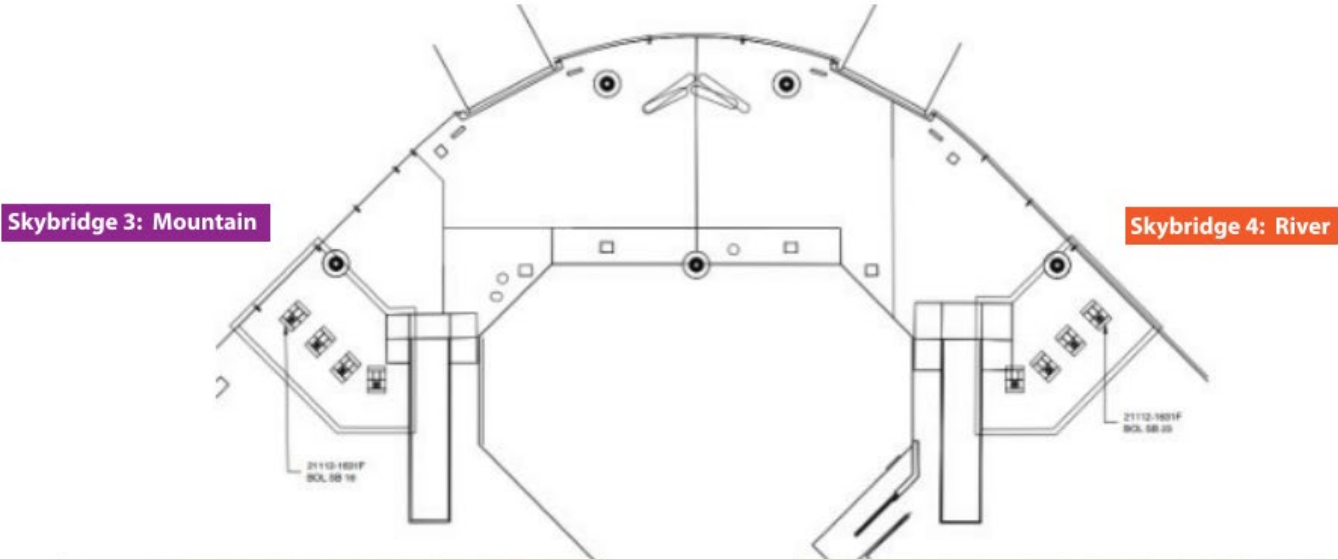
Existing elevator rehabilitation project will be installing photographs in the cabs that align with the themes that are listed on the aerial above. The bollards can help support secondary intuitive wayfinding by aligning with these themes that will continue to be reinforced throughout the garage.



Skybridge 2 (8 bollards)
Theme: Fields

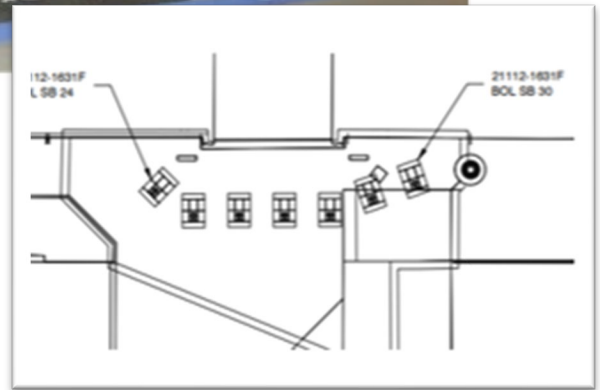


Skybridge 3 and 4 (8 bollards total)
Theme: Mountain and River

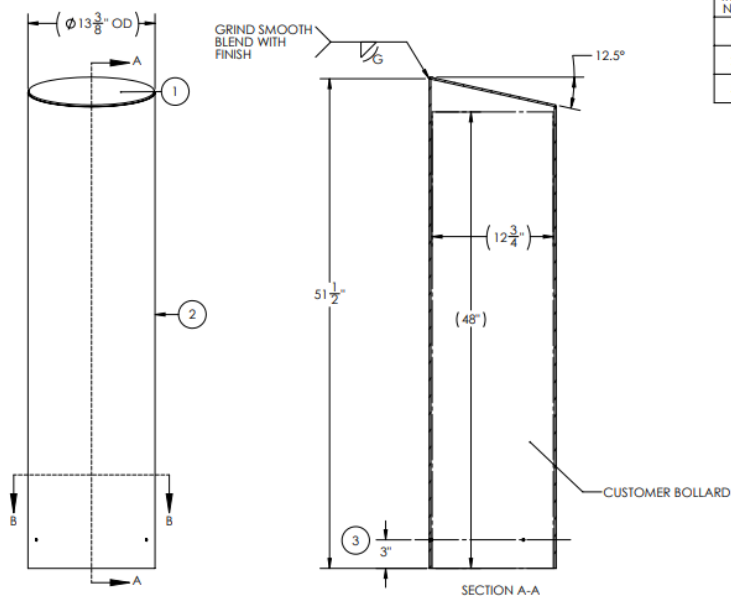


Skybridge 5 (7 bollards)

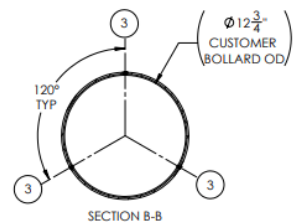
Theme: Ocean



Skybridges 2-5 Bollard Rendering:



ITEM NO.	QTY.	DESCRIPTION	MATERIAL	FINISH
1	1	CAP	304, 304L, 304/304L	#4 BOLLARD FINISH
2	1	3/16" BOLLARD SLEEVE	304, 304L, 304/304L	#4 BOLLARD FINISH
3	3	1/4-20 SET SCREW 5/16" LG	SS	N/A



Requirements:

- Dimensions : 12 ¾" (w) x 48" (h). Please, note there is a 12.5° incline at the top of the bollards.
- Selected artists will have to meet Aviation Building Department and Fire Department standards (to be determined during design phase).
- Total combined height of bollard and artwork not to exceed 70 inches

Artist Evaluation

A selection committee of Port of Seattle's professional staff and members of the regional art community will review the artist submittals. Submissions will be evaluated based on professional merit, previous public art projects, experience with unique art installations, ability to collaborate with various Port departments, and the art concept's adherence to the Port's request to highlight the strength of the existing collection.

Submission Requirements

- In the Subject of your submission email, specify that you are applying for the *SEA Bollards project opportunity*.
- Create a **single PDF** (titled "artist's last name, first initial, packet" (doejpacket.pdf)) combining all the requested information in this order:
- Submit professional resume/CV (limited to 2 pages). Teams: each team member may submit a resume.
- Contact information of 3 professional references
- Artist statement (maximum 500 words)
- 4-6 image samples of previous work
- For each of these works include Title of the piece(s), dimensions, date of completion, value and materials.

If requirements are not followed, your submission will not be presented to the selection panel.

State Business License Requirements

Awarded Artist are required to obtain a Unified Business Identifier number, or UBI number, to enter into agreement with The Port of Seattle.

For Artists whose business is located out of the State of Washington, the Artist or business is required to register with Washington's Secretary of State Office and report and pay any taxes due directly to the Department of Revenue.

For more information, please review the sample agreement or review our FAQ page provided in the solicitation package.

Insurance

Awarded Artists who enter contract with the Port of Seattle are required to provide certificate of insurance. See the sample agreement and attachments for information on insurance requirements.

Schedule

- March 26, 2025: RFQ is published online.
- **March 26, 2025 to April 9, 2025 5p.m.** PST: Artists submit qualifications.
- Mid- April 2025: Selection panel reviews submissions.
- End of April 2025: Artists are contacted with selection results.
- Q1 2026: Project Completion.

Submission Deadlines

Please e-mail your submission to: Publicart@portseattle.org

Deadline to submit all documents related to the RFQ by **April 9, 2025, 5pm PST.**

Artist Selection Notification

The selected artist will be notified via email/phone call approximately at the end of April 2025. The Port will post a procurement selection notice under the solicitation's documents tab on the Port's temporary procurement website located at the following website below.

Questions: Please e-mail: Publicart@portseattle.org